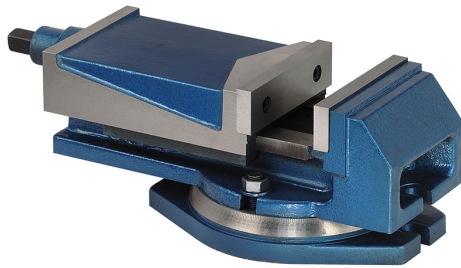


WITH INTERCHANGEABLE JAWS IN HARDENED AND GROUND STEEL.
SLIDING PARTS GROUND. FULLY COVERED SCREW. WITH CRANK.



Jaws	125 x 40 mm
Opening	100 mm g
Overall sizes	355 x 190 x 127h mm
Base dimensions	215 x 165 mm
Slot distance	195 mm
Slot	14 mm
Net weight	15 kg
Packaging dimensions	410x265x180 h mm
Gross weight	16,00 kg
EAN Code	8012667003036



Box



Cast Iron